

831-SW /R

SW series

rbh signature product



ELITE REFERENCE ON-WALL

EXTREME DYNAMIC VERSATILITY

HDF Cabinet

High Quality Aluminum Cone
Black Anodized

Reference AMT
Tweeter

Premium Aluminum Frame



If **YOU** crave the ultimate hi-fi cinema speaker, but prefer the extra 'slam' of extended mid-bass performance in your theater, the thinner, 5 inch variant of the standard SI-831R is for you!

Inherently designed for ultimate home theater performance with a little added attitude, this thin, hanging cabinet works great behind acoustically transparent screens and for whole-room installs.



831-SW/R

The 831-SW/R speaker has performance characteristics similar to the lauded larger floor standing RBH model SV-8300 with the benefit of reference level dynamics and precision mounted on wall. The 831-SW/R has three 8-inch aluminum cone woofers and a large high-quality AMT aero-striction tweeter in a MTMM driver alignment. It is capable of producing high-level, accurate, wide-range output with ultimate fidelity in large home theaters or listening rooms. The flexibility of the 831-SW/R either in room or behind acoustically transparent screens makes large theater installations a breeze. Combine with the 821C-SW/R as center channel to complete your amazing reference theater.

For ultimate impact check out the RBH S and SI Subwoofer models to complement and complete your dream home theater that will leave you, your family and guests in awe.

On-Wall-SERIES Signature & Reference

- Black anodized reference aluminum drivers housed in cast aluminum baskets

- Provides timbre matched options for multi-channel sound across all freestanding, bookshelf, on-wall and in-wall products in the SF, SV or SI-Series

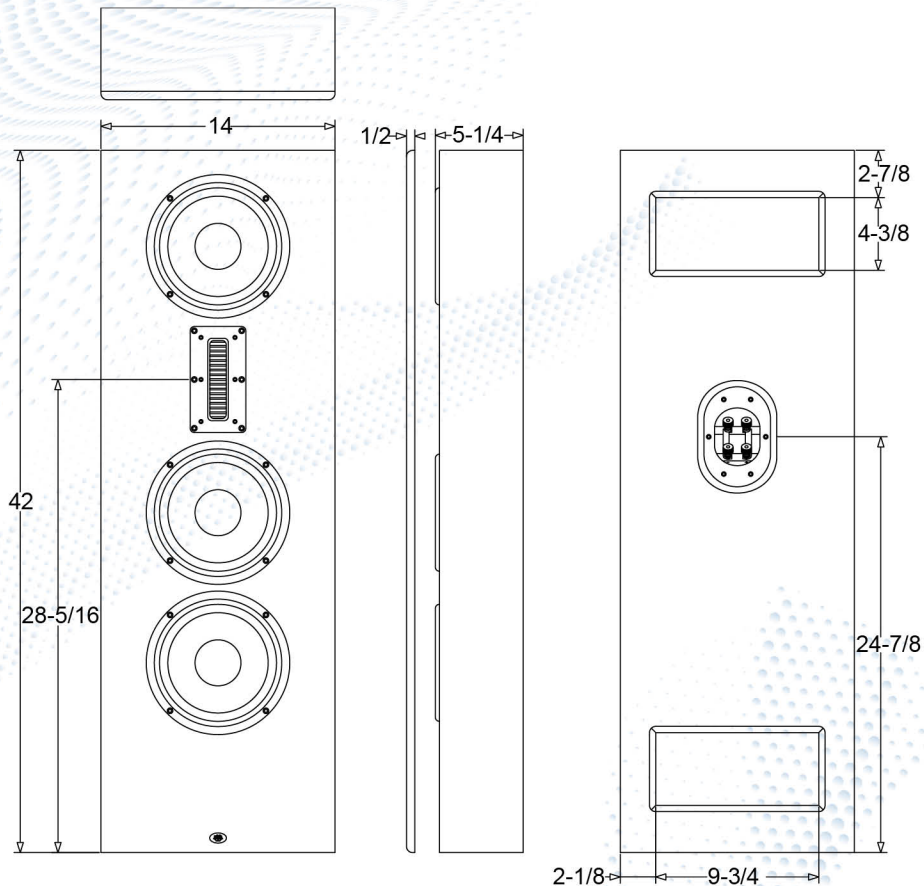
- Cabinet made in USA of High Density Fiberboard (HDF)

- Available in satin white or black



*Limited 10 Year Warranty (with registration) from date of purchase to be free from defects and workmanship. For more information contact your RBH dealer or check our website.

It is RBH Sound policy to continuously incorporate improvements into products; all specifications are subject to change without notice. For the most current information visit us online at <https://rbhsound.com>. Copyright ©2023 RBH Sound. All Rights Reserved.



Model	831-SW/R
SYSTEM TYPE	Signature Reference On-wall Loudspeaker
FREQUENCY RESPONSE	55Hz-35kHz ± 3dB
SENSITIVITY <small>(2.83V @ 1 Meter)</small>	93 dB
RECOMMENDED POWER	100-500W
DRIVE UNITS	(3) 8" (203mm) cast aluminum basket, black anodized aluminum cone woofers. (1) 4.72" x 1" (120mm x 25mm) AMT Tweeter
TWEETER PROTECTION	Yes
CROSSOVER FREQUENCY	2200Hz
CROSSOVER SLOPE	24dB/Octave, 12 dB/Octave
IMPEDANCE	4 Ω
CABINET / COLOR	HDF construction, Satin Black or White
GRILLE	Black or White cloth mag attached
WEIGHT	62 lbs (28.1kg)
FINISHED DIMENSIONS	14" W x 42" H x 5-1/2" D (356 W x 1057 H x 146 D mm)
WARRANTY	*10 Year Limited

Designed, Engineered, Tested and Assembled in USA from American and imported parts

RBH Sound • 382 Marshall Way, Ste A, Layton, Utah • USA • 84041
Phone: (801) 543-2200 • <https://rbhsound.com>